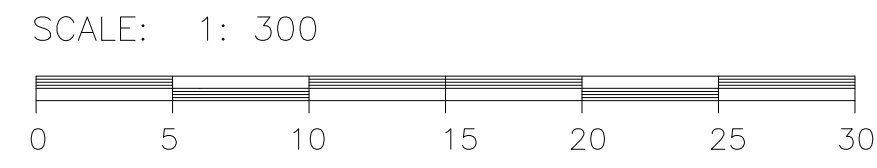


SITE PLAN OF FUTURE  
No. 27 FIRE PARAMEDIC STATION  
AT SAGE CREEK

CITY OF WINNIPEG, MANITOBA

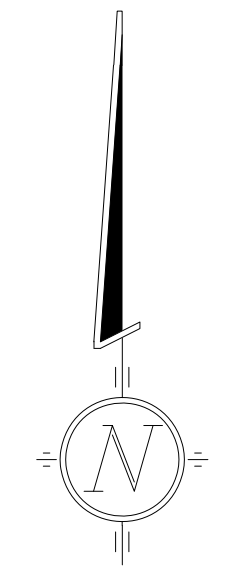


PREPARED FOR: MURPHY & MURPHY ARCHITECT INC.  
PREPARED BY: SHEPHERD AND STEVENS, PROFESSIONAL SURVEYORS

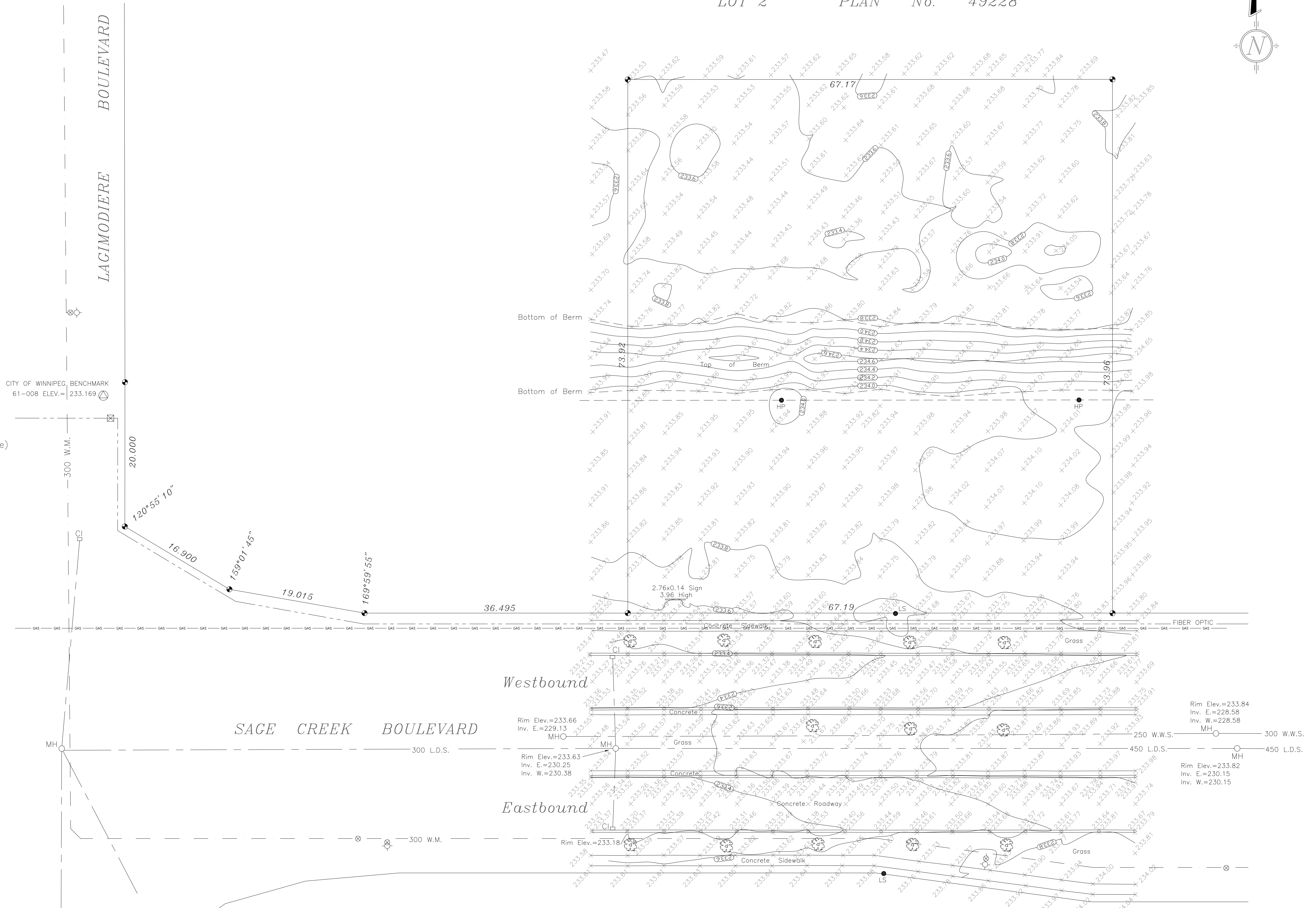
THE SURVEY REPRESENTED BY THIS PLAN WAS MADE BETWEEN THE DATES OF AUGUST 5th AND AUGUST 6th, 2010.

LANDS AFFECTED BY THIS SURVEY ARE REGISTERED IN THE NAME OF THE SAGE CREEK DEVELOPMENT CORPORATION UNDER CERTIFICATE OF TITLE No. 2402276 DESCRIBED AS LOT 2 PLAN 49228 IN LOTS 211, 212 AND 213, ROMAN CATHOLIC MISSION PROPERTY.

ENCUMBRANCES AFFECTING THIS TITLE ARE:  
INSTRUMENT No.'s 174619, 3393331, 3702294, 3917039, 3917040, 3917041 AND 3917042.



LOT 2 PLAN No. 49228



Legend:

- Denotes found Survey Monument (2.5 cm square)
- MH ○ Manhole
- CI □ Curb Inlet
- ⊕ Water Valve
- ⊙ Fire Hydrant
- HP ● Hydro Pole (Approximate Height 9m)
- △ Anchor
- LS ● Light Standard (Approximate Height 14m)
- GAS — Gas Lines
- - - Overhead Hydro
- - - Buried M.T.S., Shaw and Hydro
- - - Water Lines
- - - Sewer Lines
- 🌳 Tree

ALL DIMENSIONS ARE IN METRIC.  
THE INFORMATION RESPECTING UNDERGROUND UTILITIES ON THIS PLAN IS BASED UPON INFORMATION RECEIVED FROM THE RESPECTIVE UTILITIES AND IS ONLY TO INDICATE THE EXISTENCE OF THESE UTILITIES. NO GUARANTEE IS GIVEN THAT ALL UTILITIES AND SERVICES ARE SHOWN, OR THAT ALL THE LOCATIONS ARE CORRECT. THE SURVEYORS ACCEPT NO RESPONSIBILITY FOR ANY MISREPRESENTATION OF UNDERGROUND UTILITIES AND RECOMMEND THAT THE RESPECTIVE UTILITIES BE CONTRACTED PRIOR TO ANY EXCAVATION IN THE AREA.

DATED THIS 10th DAY OF AUGUST, 2010

Douglas T. Stevens, M.L.S., C.L.S.

Shepherd & Stevens  
PROFESSIONAL SURVEYORS

504-115 Bannatyne Ave.  
Winnipeg, MB R3B 0R3  
File No. 10/279/  
10-279 Site client.DWG